



GEOGRAPHICAL INFORMATION SYSTEMS

maps.simcoe.ca Help

Table of Contents

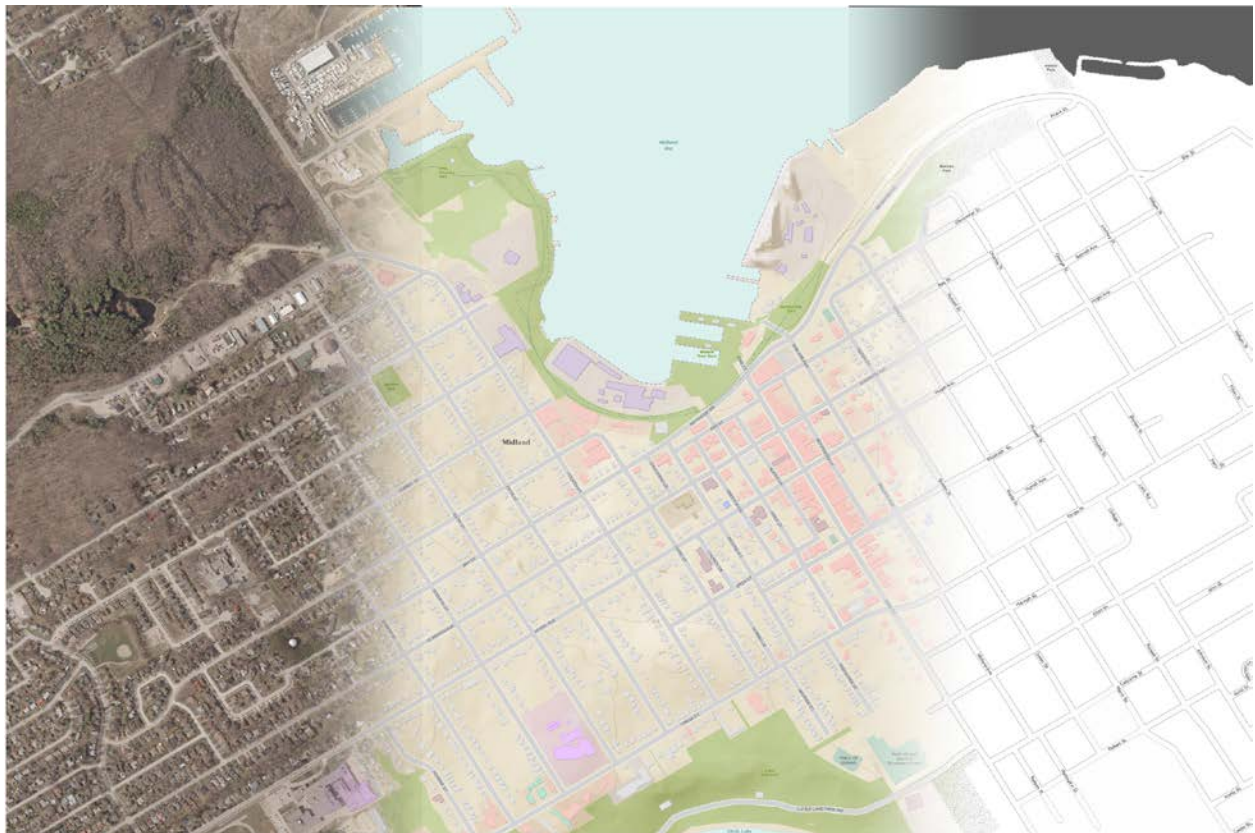
Introduction.....	1
Getting Started	3
GIS Concepts.....	5
Map Application Overview	7
Basic Mode	8
Advanced Mode.....	9
Using the Table of Contents	10
Themes	13
Base Maps.....	16
Map Navigation	19
Map Tools and Widgets.....	21
Map Tools	21
Search Tools.....	26
Using County of Simcoe Maps Services in Other Applications	35
Index	39

Introduction

Welcome



Welcome to the County of Simcoe Interactive Mapping Application help library. Although the County of Simcoe endeavors to keep this documentation up-to-date, small modifications to the user interface over time may create discrepancies in the help content. Please contact itsupport@simcoe.ca to notify us of errors or omissions.



Terms and Conditions

Follow this link to read the terms and conditions of use.

<http://maps.simcoe.ca/terms.html>

Getting Started

Getting Started

- [System Requirements](#)
- [Getting Help](#)

System Requirements

maps.simcoe.ca Recommended System Requirements

- Flash Player 11 or greater (download Link - <http://get.adobe.com/flashplayer/>)
- Modern Web Browser
 - Internet Explorer 7 (or greater)
 - Firefox
 - Google Chrome
 - Safari
- Minimum Screen Resolution: 1024x768
- Recommended Screen Resolution: 1280x1024
- High-speed Internet connection (4Mb/s or greater)

Getting Help

This Help file can be viewed on-line as an Acrobat PDF or HTML file by going to the following links

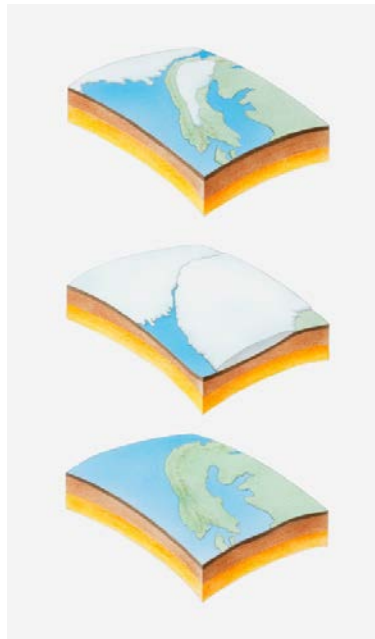
PDF - http://maps.simcoe.ca/help/maps_simcoe_help.pdf

HTML - <http://maps.simcoe.ca/help/>

GIS Concepts

Introduction to GIS

What is GIS?



Geographic Information Systems (GIS) is a technology which combines geographic information with tabular data to map (display), analyze, organize, and manipulate. Examples of geographic data could be property boundaries, roads, or rivers. The tabular data which could relate to this information could be lists of owner names, property type, tax assessment for property boundaries or road name, speed limit, address range for roads. The geographic and tabular data is joined or merged together using common information between the two.

Once the geographic and tabular data are joined together, users of GIS can display and analyze a combination of data from different sources to answer questions about a specific area (geographic extent).

What is a Web Map?

A web map such as (maps.simcoe.ca) is a type of map which is available on the Internet. The main difference between a traditional paper map and a web map is that with a web map users can interact with the map and actually receive information back from feature by clicking on it or searching. The way in which a web map is created is by taking a variety of GIS information and combining it together to present the data in a meaningful manner. The web maps that can be viewed on maps.simcoe.ca have been created by using GIS data such as Roads, Property Boundaries, Lakes and Rivers, Wetlands, Railways, Municipal Boundaries, etc. and combining them together. Each of the GIS datasets is known as a layer. When these layers are combined or placed on top of each other (as pictured above), the result is a map which is displayed showing all the information.



Map Application Overview

Map Application Overview

Basemaps

There are three different [basemaps](#) available to users to switch between in the maps.simcoe.ca application Imagery, Topo (short for Topographic) and Streets. Each of these basemaps provide a different view of Simcoe County and can be used in conjunction with layers under the Advanced modes.

Modes

There are three different application display modes that user can choose from being [Basic](#), [Advanced](#) and [Themes](#). When the application first opens Basic mode is displayed. This mode is the simplest mode available to users and provides only the most highly used feature available. Advanced Mode provides users with additional tools and search functionality as well as provides users with a table of contents which allows for layers to be turned on or off on top of each basemap. The Themes mode allows users to explore a customized view of specific topics of interests within the County of Simcoe. When a theme is selected a customized legend and tool set is presented on the left of the screen for the user to interact with.

Functionality Matrix

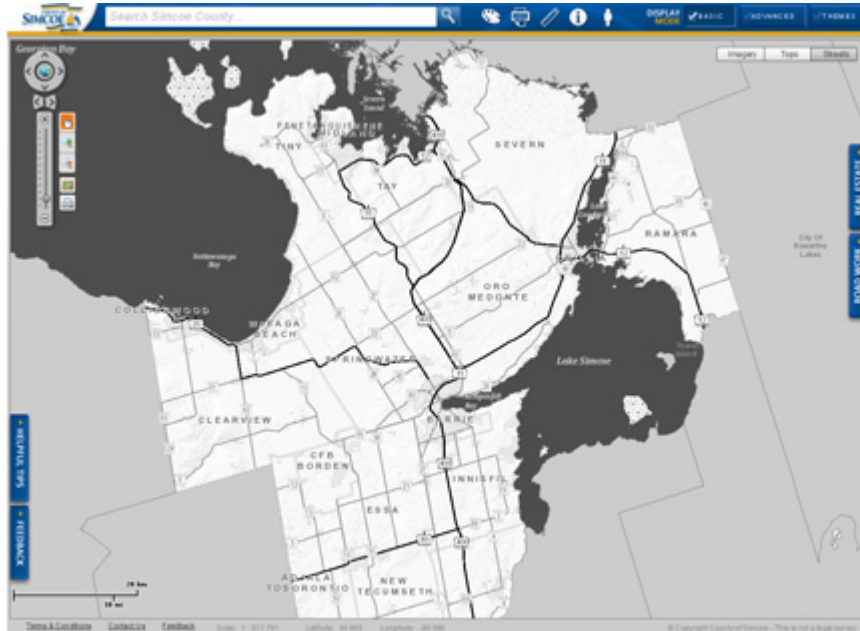
- * Not available in all themes.

Function	Basic	Advanced	Themes
Map Application Search	●	●	●
Map Navigation	●	●	●
<u>Basemap</u> Switching	●	●	●
Address Search		●	●
Roll Number Search		●	●
PIN Number Search		●	●
Forest Tract Search		●	●
Lot and Concession Search		●	●
<u>MLS</u> Number Search		●	●
Draw	●	●	●
Print	●	●	●
Measure	●	●	●
Identify	●	●	●
Street View	●	●	●
Jump to Municipality		●	●
<u>XY</u> Coordinates		●	●
View Properties For Sale	●	●	●
View Planned Road Work	●	●	●
Turn Layers on or off		●	●
Find detailed Forest and recreation information			● *
Find detailed childcare information			● *
Find bag tag locations			● *
Find out Garbage day		●	● *
Find Landfill information			● *
Find Property information	●	●	● *

Basic Mode

Basic Mode

Basic display mode is the default mode when the application initially opens. This mode is the simplest in terms of functionality and usability. Basic mode is the basis which all other modes are built upon. When using Basic mode a limited number of tools are made available as well as the ability to switch between [basemaps](#). The tools which are made available in basic mode are as follows: Search, Draw, Print, Measure, Identify, and Street View. To learn more about these tools please refer to the [Map Tools and Widgets](#) Section of this Document.



Basic Mode

Search

The Search area located at the top of the application allows for users to enter in search criteria and zoom to a selected location. When typing in the search area a drop down list will generate allowing users to select the item they are looking for and zoom the map to the location.



Search Area

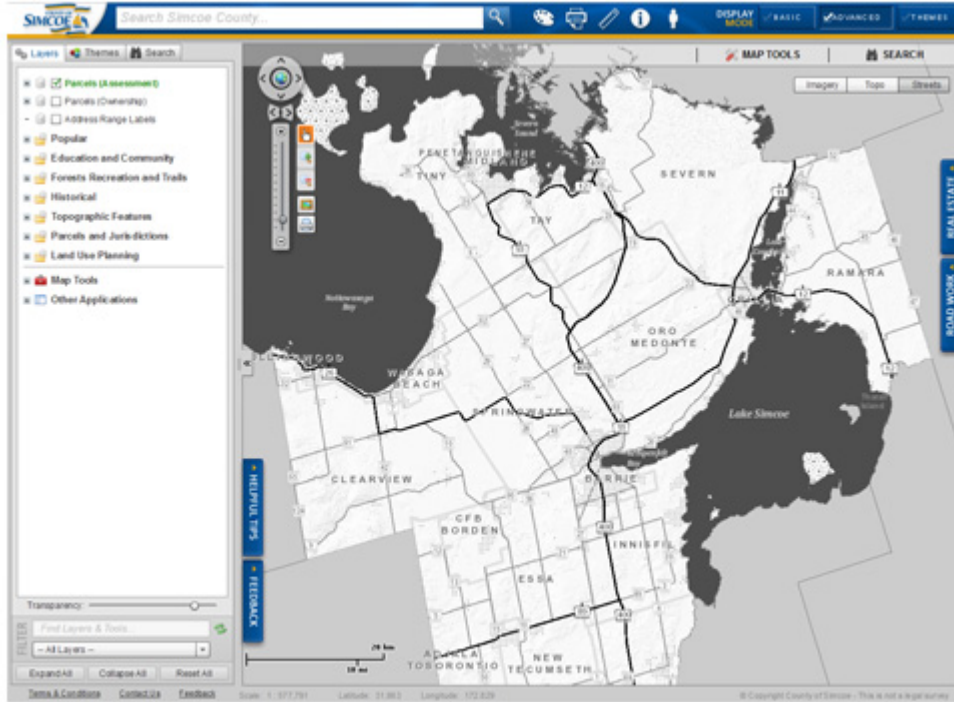
The items which can be searched are:

- Street Name or Street Address
- Ownership Parcel PIN
- Assessment Parcel Roll Number
- Place Names
- Municipal Jurisdictions
- Geographic Township (Historic Township Names)
- Water Features (Major Lakes, Rivers, Streams, Bays, etc.)
- Select Community and Tourism Features

Advanced Mode

Advanced Mode

Advanced mode provides the user with all the functionality found in Basic mode but with a Table of Contents and additional Search and Map tools. The Table of Contents section allows the user to add/turn on different datasets on top of the [basemaps](#) to create a more customized appearance for their mapping requirements. Also in Advanced mode users are able to access additional [Search and Map tools](#) to assist them in finding the information they need.

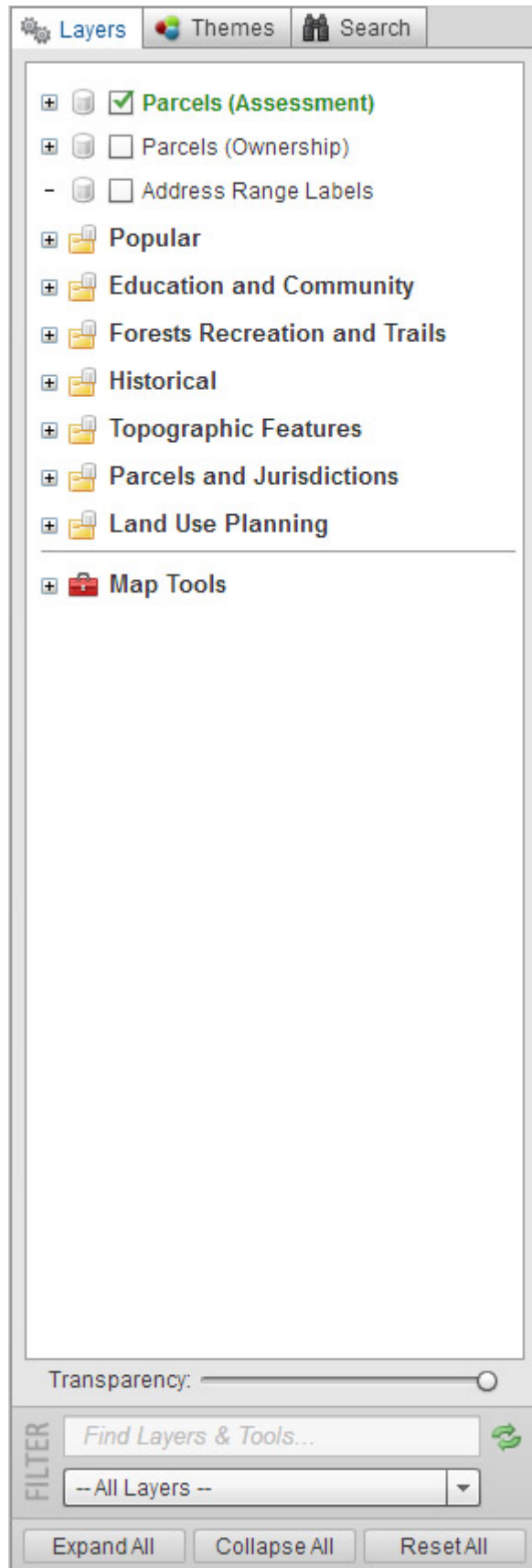


Advanced Mode

Using the Table of Contents

Using the Table of Contents

The Table of Contents in the Advanced Viewer has a variety of functionality which advanced users can access to assist them in their mapping. The following sections will outline each piece of functionality.



- [Turning Layers On and Off](#)
- [Live Layers](#)
- [Viewing Layer Symbology](#)
- [Layer Transparent Slider](#)
- [Filtering the Table of Contents](#)
- [Advanced Search](#)

Turning Layers On and Off

Layers in the Table of Contents can be either turned on (display) or turned off (not display). This functionality allows users to customize their web maps to display information they need. To Turn on or Turn off layer layer in the Table of Contents users must click in the check box next to the layer. When there is a check mark displayed next to the layer it means that the layer is currently displayed.

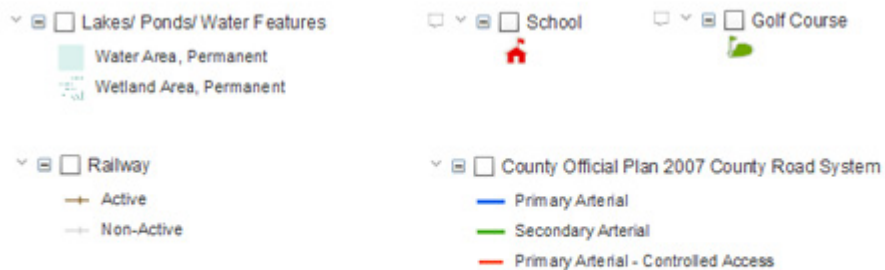
NOTE: Some layers have been configured to only display at certain map scales. The title of the layer (when toggled on) will appear faded and the check box will have a grey fill if the layer is currently not available for display at that scale. Zoom in to have the layer appear in your map. Limiting display scales is usually only done on layers with lots of features in order to improve draw time or reduce clutter on the map.

Live Layers

Live Layers are interactive layers which will provide additional information when an individual feature on that layer is clicked on in the map. A live layer can be identified through the Table of Contents. In the Table of Contents if a layer is considered "live" a call-out icon will be displayed to the left of the layer in the Table of Contents. When the call-out is shown it means that when the layer is turned on if the user clicks on a feature additional information will be displayed.

Viewing Layer Symbology

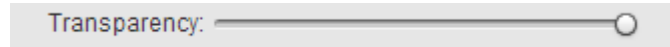
Layer symbology can be viewed through the Table of Contents. When a plus symbol to the left of a layer is clicked, it will expand the layer so that the associated symbology is shown. Some layers have multiple symbols to represent different categories within the layer.



Layer Symbology Examples

Layer Transparency Slider

The Layer Transparency Slider located at the bottom of the Table of Contents Pane allows for users to adjust the transparency of any of the layers which are turned on in the Table of Contents. The transparency cannot be set on a layer by layer basis but rather on all layers at the same time. To make a layer less visible move the slider to the left and to make it appear fully visible move the slider to the right. By default the slider is set to 70% opacity.



Filtering the Table of Contents

The Table of Contents has a filter ability which allows users to find available layers using filter terms. At the bottom of the Table of Contents there is a "Find Layers & Tools..." text box. Users are able to enter whole or part words into this area and the real time search will display layers and applications which fit the search criteria. The Table of Contents filter can further filter by selecting the "All Layers", "Checked Layers", or "Unchecked Layers" options.

Advanced Search

The search available in Advanced Mode is very similar to the [basic search](#) meaning that the same features are available to be found. The difference between the two searches is that the advanced search allows users to see more results and to filter by type and municipality to refine the search further.

To use:

Type what you are looking for in the top text box, if you wish, filter by type and/or municipality. The results will show up in the search results in the table of contents, click on the result you are looking for to zoom the map view to that location.

NOTE: The results list is limited to returning a maximum of the top 20 results. If a user is not finding the results relevant they should refine their search by trying to search different terms or applying a type or municipality filter.

Themes

Themes

Map Themes can be accessed from the Themes button on to top right of the application or the tab on the table of contents. A map theme is a collection of similar layers displayed together. Activating the themes opens the Table of Contents pane on the left side of the screen, click on the map theme of your choice to turn on the theme.

[Forest & Recreation](#) – includes County Forest Tracts, Conservation Areas, Provincial and Municipal parks. This theme provides information regarding permitted and prohibited activities and links to other recreational clubs, provincial parks and conservation areas.

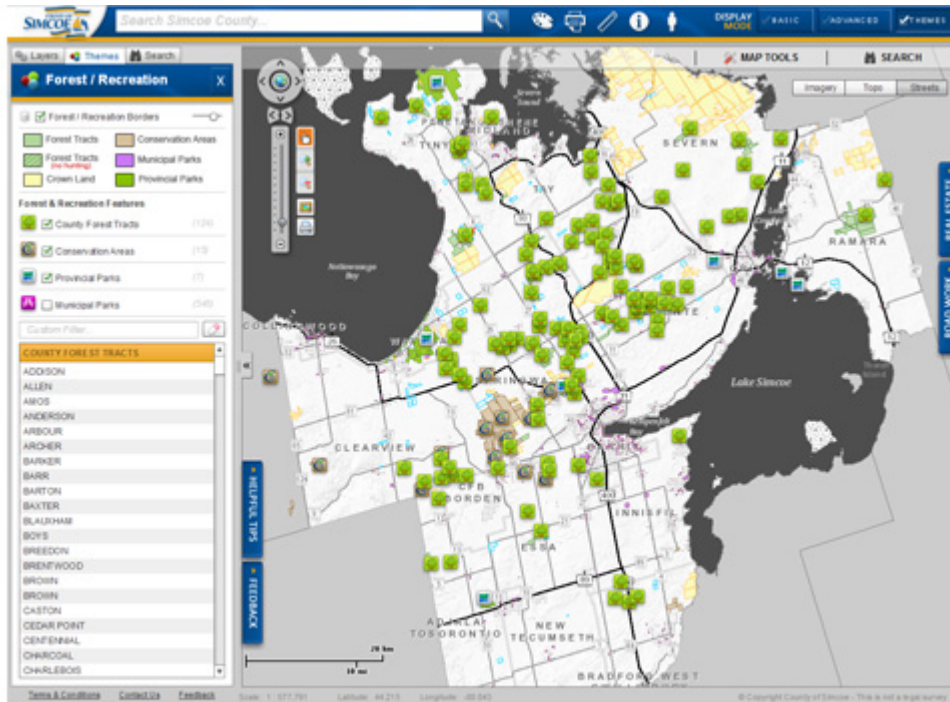
[Childcare Facilities](#) – includes information about all licensed child care facilities within Simcoe County. Additional information includes the type of childcare programs available, address, and phone number.

[Solid Waste Facilities](#) – includes landfill locations, bag tag locations and collection day.

The additional data turned on by a theme is interactive and can be clicked on to access more information. To close a theme click on the X on the top right of the table of contents pane.

Forest and Recreation

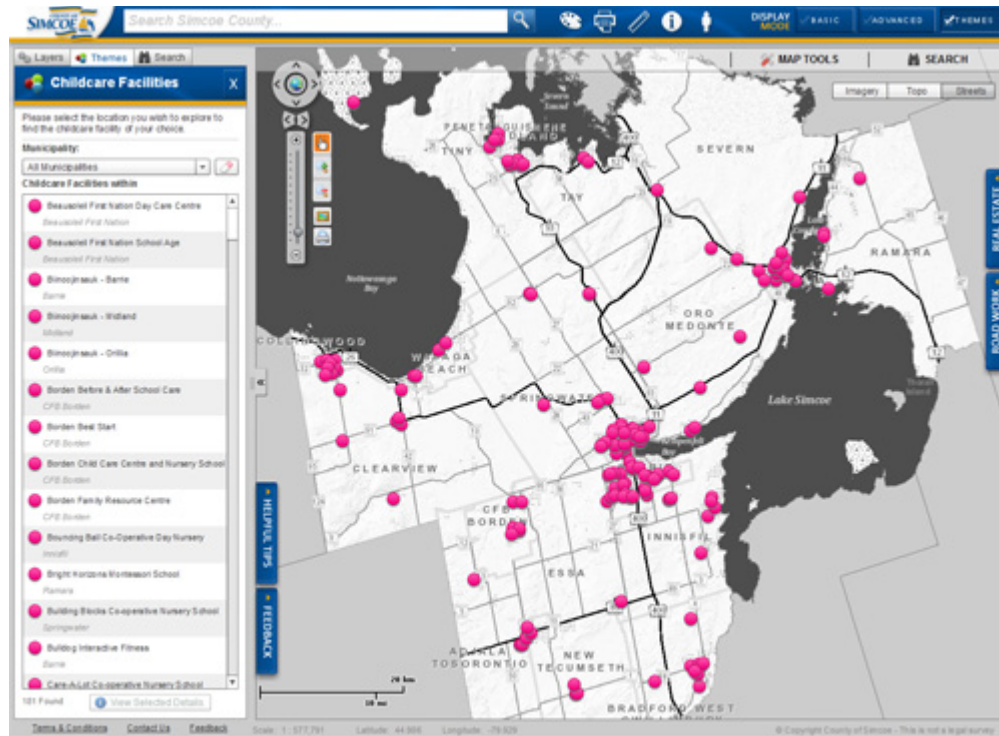
- Users can turn on and off the live layers (County Forest Tracts, Conservation Areas, Provincial Parks and Municipal Parks)
- Click the green check mark beside the layer in the table of contents to turn on and off the data.
- Click on the layer symbol in the map to see more information for each individual item.
- Search is provided to allow the user to type the name of a recreation site and the results will filter, click on the result to re-center the map.
- Forest/Recreation Borders can be turned on/off. The user can also use the slider next to the layer to change the transparency of the features in the theme.



Forest and Recreation Theme

Childcare Facilities

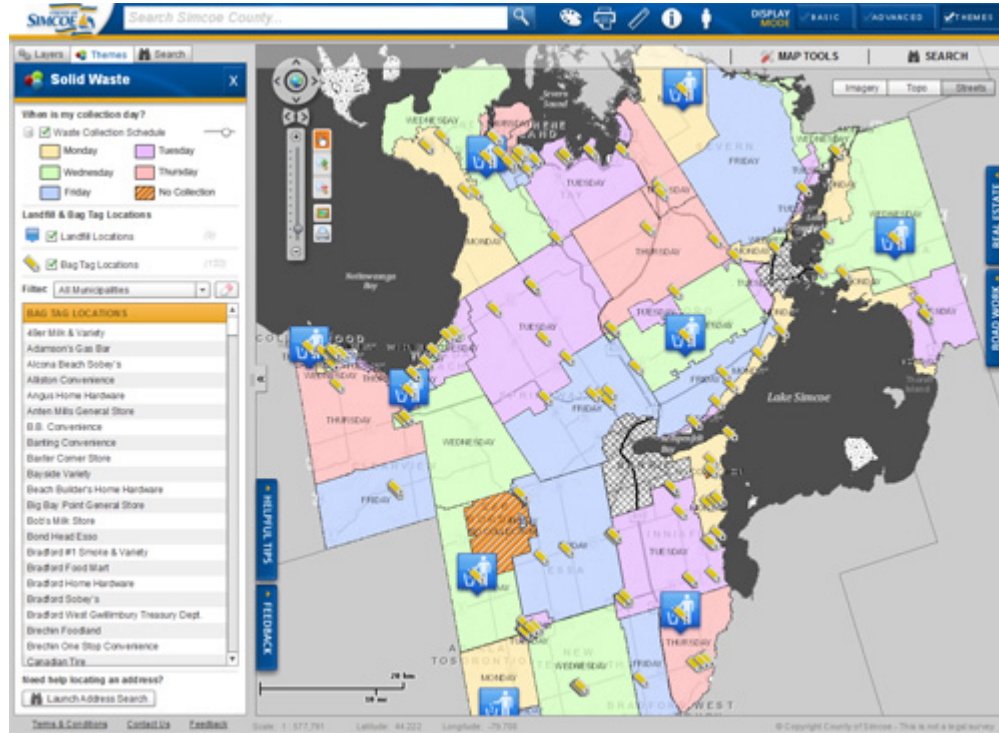
- All the facilities are listed down in the Table of Contents pane in alphabetical order, to filter by municipality, the Municipality drop down can be used to choose a municipality and the results will filter and the map will zoom in. To clear a filter click the eraser button located beside the municipality drop down. The individual facilities are a live layer and a user can click on a location to receive more details about the program available at that location.



Childcare Theme

Solid Waste Facilities

- Live layers available include Waste Collection Schedule, Landfill and Bag Tag Locations. To turn on and off the live layers click the green check mark beside the layer in the table of contents.
- To filter the results of the landfill and bag tag locations use the drop down of all municipalities, choose a municipality and the results will filter. To clear a filter click the eraser button located beside the municipality drop down.



Solid Waste Theme

Base Maps

Base Maps

There are three different basemaps available for users to toggle between in the maps.simcoe.ca application: Imagery, Topo and Streets. Each of these basemaps provide a different view of Simcoe County and can be used in conjunction with layers under the Advanced modes.

Basemap Types

Imagery - The Imagery basemap allows users to view aerial photographs of the County of Simcoe. When the Imagery basemap is active the [imagery slider](#) is available allowing users to move between aerial photography from different years.

Topo - The Topo basemap is the most detailed basemap showing features such as buildings, contours, streets, address numbers, schools, wetlands etc. This is the default basemap when the application is opened.

Streets - The Streets base map is a basic black and white map which is meant to allow for markup and other information to be the centre of attention. This basemap is great when used with the drawing tools.



Imagery Basemap



Topo Basemap



Street Basemap

Imagery Slider

The Imagery Slider is available to users when they are viewing the Imagery Basemap. The Imagery Slider allows users to move between aerial photos taken at various years. The Imagery Slider also has a "Hide Roads" toggle which allows users the ability to view aerial imagery without any roads displayed.



Data

Data Updated by Simcoe County

Data is updated by Simcoe County GIS staff, edits to the data are made on an as needed basis. Civic addresses and road network are updated with daily frequency.

- Civic Address Points
- Single Line Road Network
- Garbage Collection Zones
- Municipal Administration Centres
- Paramedic Stations
- Hospitals
- Firehalls
- Museum & Archives
- Schools
- Long Term Care Facilities
- Ontario Works Offices
- Train Stations
- School Attendance Boundaries
- Golf Courses
- Marinas & Moorings
- Boat Launches
- Trails
- County Forest Tracts

- County Forest Access Roads
- Municipal Parks
- Tree Cut Permits
- Official Plan Layers
- Contours

Data Acquired from other sources

- Railways
- Water features
- Lot and Concession
- Geographic Townships
- Wetlands
- ANSI (Areas of Natural and Scientific Interest)
- Well Head Protection Areas
- Forested Area/Woodlands
- Provincial Parks
- Conservation Areas
- Assessment Parcels
- Ownership Parcels
- Orthophotography (Aerial Photos)

Right Click Context Menu

The right click context menu of the maps.simcoe.ca application provides a means for users to access certain features and information quickly and easily.

In the menu there are default flash viewer features and feature added by Simcoe County GIS.

The default flash features are as follows:

- About ArcGIS Viewer for Flex
- Settings
- Global Settings
- About Adobe Flash Player

The features added by Simcoe County GIS are:

- Property Information - Selecting this will open the [Property Information call out](#) for the property
- Copy Map XY Coordinates to Clipboard - Selecting this option will copy the coordinate that the map is currently displayed in (WGS 84 Web Mercator)
- Copy Projected XY Coordinates to Clipboard - Selecting this option will open the [Coordinates](#) menu allowing the user to decide which Coordinate System
- Go to XY Coordinates - Selecting this will open the Go to Coordinates menu allowing the user to input their coordinates and zoom to them.
- Get Map Extent - This is a developer tool which allows for GIS developers to get map extents for their purposes.

Map Navigation

Map Navigation

Tools for map navigation include the standard:



Pan - click and hold to pan the map.

Zoom in - click once to zoom the map in at stepped increments, or click and draw a box to zoom in to the extent of the box.

Zoom out - click once to zoom the map out at stepped increments, or click and draw a box to zoom out the extent of the box.

You can also use the scroll wheel on the mouse to zoom in and out quickly.




Other navigation tools include the Globe which will reset the map to full extent. The "v" buttons will pan the map up down or side to side.



The + - scale will zoom the map in or out. It will zoom at stepped increments if clicking the + or – buttons, the slider can also be dragged to zoom in or out.

Zoom to Visible Extent

Certain layers in the Table of contents such as Municipal Parks and County Forest Access Roads are grayed out at certain map scales. This is because there is a scale dependency placed on the layer, meaning the map needs to be zoomed in for the layer to appear. An easy way to zoom to visible scale is to click on the  symbol beside the layer name in the table of contents, and click Zoom to visible scale. The other option is zoom to layer extent, which will recenter the map to the extent of the feature class.

Map Tools and Widgets

Map Tools and Widgets

The maps.simcoe.ca application has a variety of [Map Tools](#), [Search Tools](#) and Widgets that users can use to assist with their mapping. The Tools which are available are as follows.

Map Tools

- [Draw](#)
- [Print](#)
- [Measure](#)
- [Identify](#)
- [Street View](#)
- [Jump to Municipality](#)
- [XY Coordinates](#)

Search Tools

- [Address Search](#)
- [Roll Number Search](#)
- [PIN Number Search](#)
- [Forest Tract Search](#)
- [Lot and Concession Search](#)
- [MLS Number Search](#)
- [Intersection Search](#)

Widgets

- [Property Information](#)
- [Real Estate Widget](#)
- [Road Work Widget](#)
- [Helpful Hints](#)
- [Feedback](#)

Map Tools

Map Tools

Map tools include:

- [Draw](#)
- [Print](#)
- [Measure](#)
- [Identify](#)
- [Street View](#)
- [Jump to Municipality](#)
- [XY Coordinates](#)

Draw

The Draw widget allows the user to mark up the map either with symbols, lines, shapes or text.

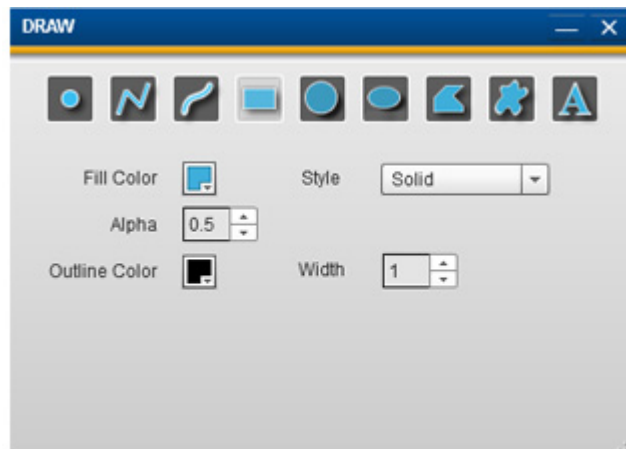
Depending on the shape selected different draw options are available for fill colour, style, transparency (alpha), outline colour and width.

These settings must be made before you start your drawing as they cannot be changed once drawing has started.

To clear all markups click the "Clear drawing" link, to delete markups one at a time select the markup with your mouse, right click and select clear.

To edit the drawing, select the shape and the vertices will appear as gray squares, click on a vertice to alter the shape, or right click on a vertice and select delete vertice or click on the outline and add a vertice.

To add text to the map, enter the text in the draw widget, select font, styles, colour and size then click on the map where you would like to text to appear.



Draw

Print

The print widget lets the user output the map view in a variety of formats at different qualities and sizes.

Functionality of the Print widget allows users to enter a custom title for the map, Select a template to use, Select an output format, as well as an output quality.

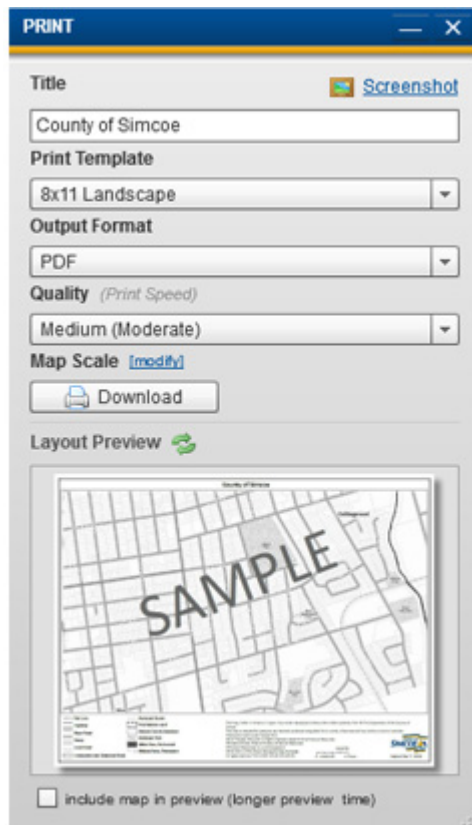
Available Templates (The template provides a legend, scale bar, north arrow etc)

- 8x11 landscape
- 8x11 portrait
- 11x17 landscape
- 11x17 portrait

Output Formats

- JPEG
- PNG
- EPS
- GIF
- SVG

To complete the download process the "Download" button must be selected, when the download is complete users are given the option to save the file to their computer or open it in a new window to review.



Print

Alternative option to Print

If you wish to save a jpeg of your map view without the template items (legend, title etc.) then click on the screenshot link at the top of the print widget and navigate to where you would like to save the image.

Measure

The Measure tool lets users measure distance and area in a variety of units.

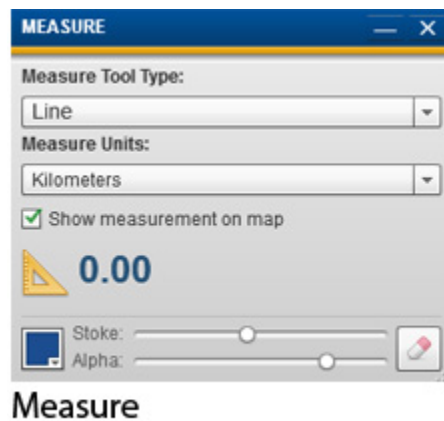
To use the tool:

1. Select the tool type, line, polyline, freehand line, rectangle, circle, polygon or freehand polygon
2. Select the unit of measure
3. Measure your item on the map

The colour of the drawing markup can be changed by clicking the colour swatch at the bottom of the widget, along with the stroke thickness and transparency.

The measurements in the map can be turned off by unchecking the "Show measurement on the map" box.

When you close the widget, the drawing markup will be cleared.



Identify

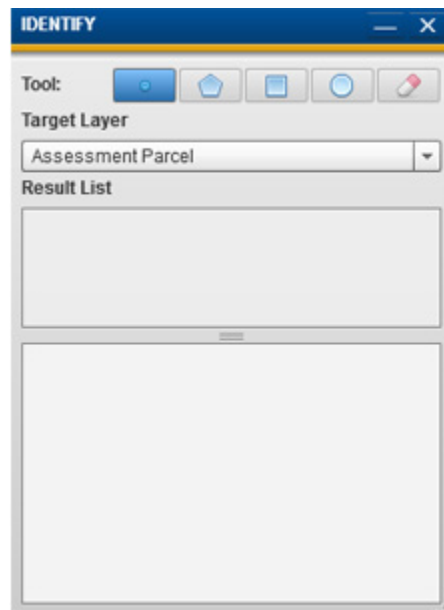
The identify widget allows the user to get more information about Assessment Parcels, Ownership Parcels, Roads, Jurisdictions, County Forest Tracts and Address Numbers.

Identify is completed by clicking a point, or drawing a shape, using the tools at the top of the widget to select how you would like to identify.

To Use the Tool:

1. Select the tool (how you would like to identify)
2. Select the layer you would like more information about using the drop down list.
3. Click on the map if you have selected the point tool or draw a shape on the map.

The results will be shown below in the results list. Click the result to highlight the feature on the map. The attributes of the result will be shown below the results. If you wish to export the results to excel click the "Export Results as CSV" and save the file locally to your computer.



Identify

Street View

To use Google Street View within maps.simcoe.ca, click on the street view icon on the top banner of the application

Then click on the map in the area where you would like to see street view for. The Street View Viewer window will open and show you the Street View imagery. If there is no imagery available in that area a message box will open, the street viewer will open showing Google's aerial photos.

The Street View Viewer allows you to view 360 using the tools on the top left of the viewer window, use the tools on the top right of the viewer to view full screen.

To deactivate Street View close the street view widget using the X on the top right of the widget.

Coordinates

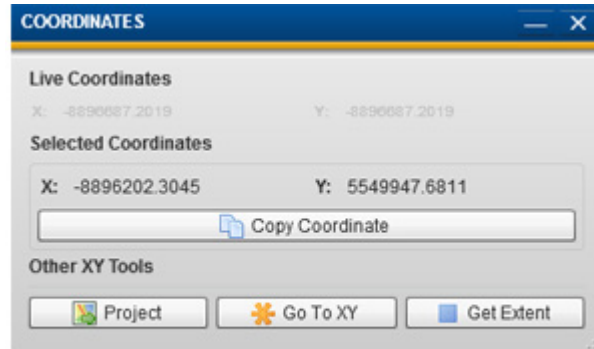
The Coordinates tool allows user or gather geographic coordinates from the map. The Coordinates tool provides a variety of functionality such as Live Coordinates, Selected Coordinates, Project coordinates, Go to coordinates, and Get Extent. Below each of the following will be explained.

Live Coordinates - Live coordinates allows users to see the current location of their cursor. The coordinates are updated as the cursor is moved.

Selected Coordinates - Selected Coordinates allows users to click a location on the map and have it displayed in the dialog. The coordinates, unlike Live Coordinates are not updated when the cursor is moved but rather when a

user selects a new location on the map. The "Copy Coordinate" button will copy the coordinates to the user's clipboard.

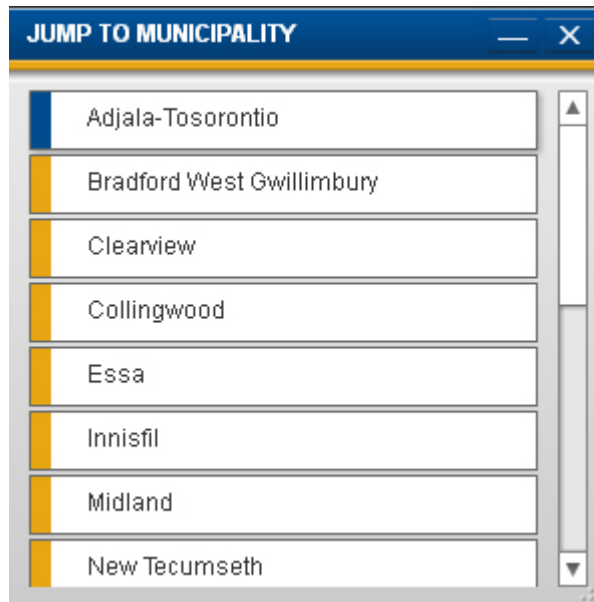
Other XY Tools - The Other XY Tools option allows users to project coordinates from one coordinate systems to another so that the coordinates could be used outside the application, Go to and XY, or Get the current extent of the Map (Developer Tool).



Coordinates

Jump to Municipality

The Jump to Municipality Widget is a scrollable list of the municipalities in Simcoe County, click on the municipality name to zoom the map extents to the municipal border.



Search Tools

Search Tools

The Search Tools included in the maps.simcoe.ca application allows user to search for items inside the map based on specified criteria.

Search Tools:

- [Address Search](#)
- [Roll Number Search](#)
- [PIN Number Search](#)
- [Forest Tract Search](#)
- [Lot and Concession Search](#)
- [MLS Number Search](#)
- [Intersection Search](#)

Fast Search

The Search area located at the top of the application allows for users to enter in search criteria and zoom to a selected location. When typing in the search area a drop down list will generate allowing users to select the item they are looking for and zoom the map to the location.



Search Area

The items which can be searched are:

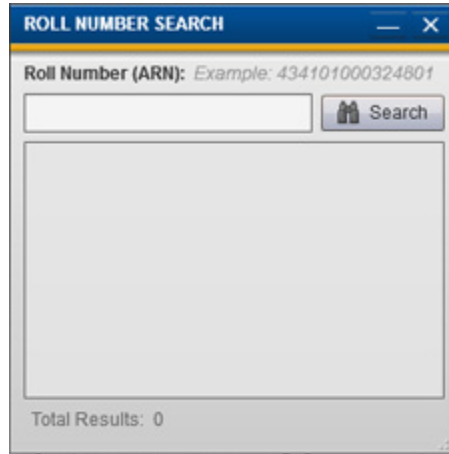
- Street Name or Street Address
- Intersections
- Ownership Parcel PIN
- Assessment Parcel Roll Number
- Place Names
- Municipal Jurisdictions
- Geographic Township (Historic Township Names)
- Water Features (Major Lakes, Rivers, Streams, Bays, etc.)
- Select Community and Tourism Features

Roll Number Search

A roll number is a 15 digit number used for tax assessment, usually found on your tax bill. Assessment Roll Numbers (ARN) for the County of Simcoe start with 43.

To use the Roll number search, enter the 15 digit number or a partial roll number and click the search button.

The results will be displayed below, click on the result to zoom the map to the parcel. Click the X on the top right of the Roll Number Search Widget to exit clear your search.



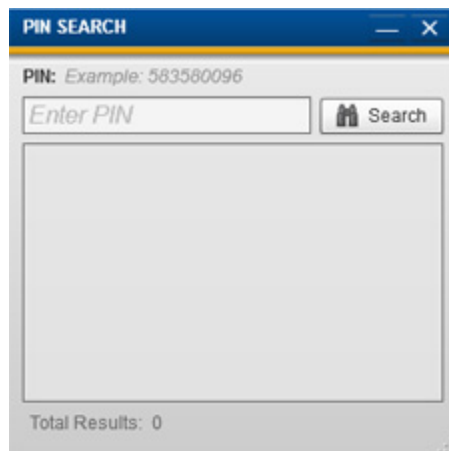
Roll Number Search

PIN Number Search

A Property Identification Number (PIN) is a 9 digit number used for identifying ownership parcels, PINs can be found on a legal survey.

PINs make up the Ownership Parcel fabric and are not always coincident to the Assessment Parcel fabric.

To use the PIN search, enter the 9 digit number or a partial PIN and click the search button. The results will be displayed below, click on the result to zoom the map to the parcel. Click the X on the top right of the PIN Search Widget to exit clear your search.



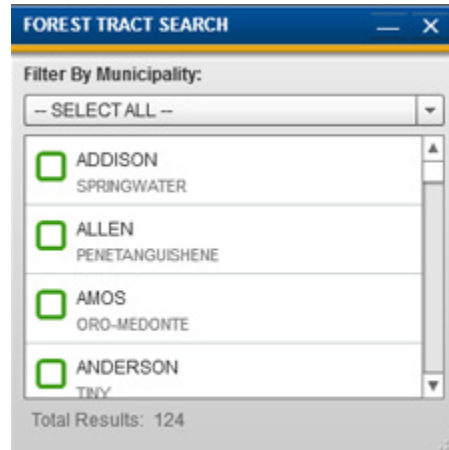
PIN Number Search

Forest Tract Search

The Simcoe County Forest is the largest and one of the most productive municipal forests in Ontario, totaling over 31,000 acres. Originally established to rehabilitate 'wastelands', these forests provide a multitude of environmental, social, and economic benefits to the County including protection of wildlife habitat and water resources, public education and recreation, scientific research and the production of wood products.

The Forest Tract Search is a scrollable alphabetical list of the Forests by name. To filter the list by area use the Municipality drop down at the top of the widget. To clear a filter, use the "Select All" option in the drop down menu.

When a Forest Tract is selected the result is the map zooming to the location of the forest tract.



Forest Tract Search

Lot and Concession Search

To use the Lot and Concession Search enter the Lot Number the first text box and the Concession Number in the second. Click the Search button.

To filter by Geographic Township* use the drop down menu and choose the township. The geographic township is displayed in the results.

Click on the result to zoom the map to the Lot/Con.

Click the X on the top right of the Roll Number Search Widget to exit and clear your search.

A concession is a polygon feature that identifies a major subdivision of geographic townships. A concession is composed of contiguous lots. © Land Information Ontario

*A geographic township is a polygon feature that indicates the fundamental land subdivision fabric of the Province. Each Geographic Township area may or may not be the same as the jurisdictional area of the township. © Land Information Ontario



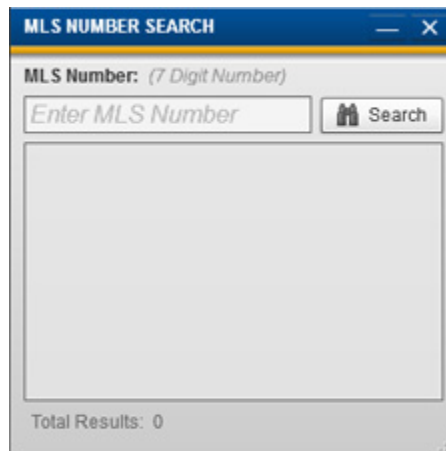
Lot/Con Search

MLS Number Search

The MLS Number Search allows users to search current real estate listings from the Barrie and District Real Estate Board. To use the MLS number search enter the 7 digit number and select the 'search' button.

The results will be displayed, click on a result to zoom to the property.

**Please note we only display properties for sale that are listing with the Barrie Real Estate Board.



MLS Number Search

Address Search

To use the address search enter the address number in the first text box and enter the street name in the second text box.

As you type the street name a street list will auto-populate, choose the street from the list.

Click the 'Search Address' button, the results will be displayed below.

If your search does not return a result or if you do not know the street number, leave this street number blank and the search will return all the addresses on the street.

To filter the results by a municipality, use the Municipality Filter drop-down at the top of the application. To clear a filter use the "Select All" option.



Address Search

Intersection Search

To use the intersection search enter the street name in the first text box and enter the name of the intersecting street in the second text box.

As you type the street names a street list will auto-populate, choose the street from the list.

Click the 'Locate Intersection' button, the results will be displayed below.

Intersection Search

Property Information

Detailed property information can be found for any property by simply clicking on it in the map. When a property is clicked a property information call out, like the one below is displayed showing the information pertaining to the property. The information displayed is categorized into five tabs in the call out each representing different information. The information can also be downloaded and viewed as a pdf file.

The information in each tab is as follows:

General

Roll Number: This is a unique property identification number which is assigned by the Municipal Property Assessment Corporation (MPAC) that is used to identify property for taxation purposes.

Address: The address assigned to the subject property.

Property Type: The type of property as assigned by MPAC.

Tax Assessment: This is the assessed value of the property as assigned by MPAC and may not reflect current market value.

Emergency

Closest Police Station: The name and distance of the closest police station.

Closest Firehall: The name and distance of the closest police station.

Waste

Garbage/Recycling Collection Day: Represent the day at which Garbage/Recycling pickup is scheduled for the property.

Bag Tag Locations: A list of retail outlets where bag tags can be purchased.

Landfill Locations: A listing of the two closest landfill locations, one for General waste and one for hazardous waste.

Schools

Catholic Elementary: Displays the Catholic Elementary school assigned to this property.

Catholic Secondary: Displays the Catholic Secondary school assigned to this property.

Catholic School Board Website: A URL link to the Catholic School board website.

Public Elementary: Displays the Public Elementary school assigned to this property.

Public Secondary: Displays the Public Secondary school assigned to this property.

Public School Board Website: A URL link to the Public School board website.

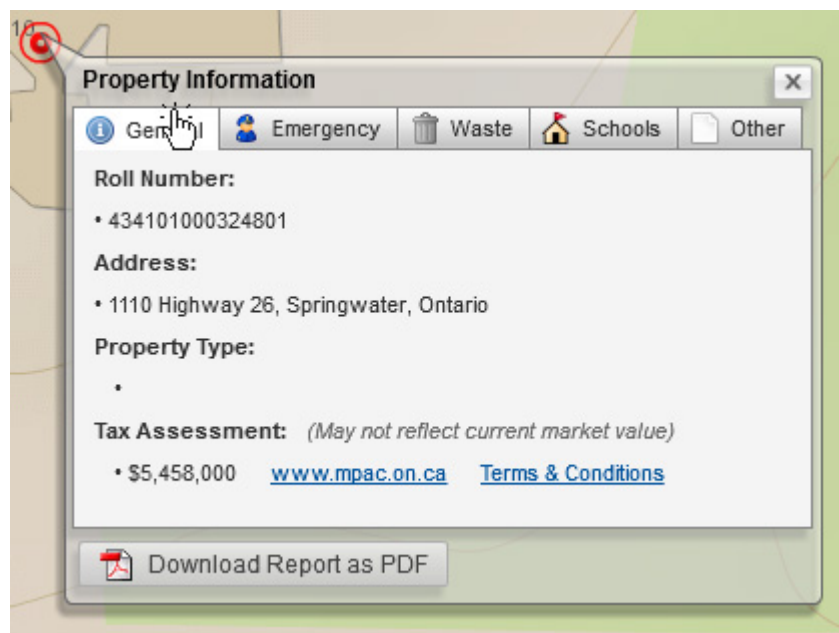
Other

Library: The name and distance of the closest library within the property's municipality.

Municipal Administration Centre: The name and distance of the Municipal Administration Centre within the municipality.

Closest Fire Hydrant: The distance to the closest fire hydrant (if more than 2km away "Greater than 2km is displayed").

Closest Hospital: The name of the closest hospital.



Real Estate Widget

The Real Estate Widget allows users to view properties for sale inside Simcoe County that are listed with the Barrie and District Association of Realtors. The Real Estate widget categorizes and symbolizes properties for sale by Residential, Condos, Commercial, Farms, and Vacant Land allowing user to toggle the type of properties for sale on or off depending on their criteria.

When the user selects a property for sale a call out is displayed which displays the MLS number for the property, the Property Type, and the Roll Number. There are also three buttons displayed to the user being MLS Listing, Photos, and Zoom. The MLS Listing button will load the MLS web page for the list, the

Photos button will display the photos of the property to the user and Zoom button will zoom the map into the property.

Road Work Widget

The Road Work widget allows users to view a list and location of the County of Simcoe road work. The widget divides the work into Road Construction and Bridge Construction which are symbolized differently.

Both the Road Construction and Bridge Construction feature are considered to be [Live Layers](#) providing more information when they are clicked in the map. Information contained in the Live Layers includes detailed location information, schedule, and description.

Please note: The Road Work widget only displays work in which the County of Simcoe is completing. It does not include work which is being completed by any local municipalities or provincial ministries.

Helpful Hints

The Help Tips widget provides users with tips on how to use the maps.simcoe.ca application. Users are able to select a "Don't show again" option that will not expand the Helpful tips widget when the application is loaded. The helpful hints widget is constantly updated with new tips which can assist basic and advanced users with their workflows.

Feedback

The Feedback widget is a collapsible widget that provides users with a simple method of submitting their comments on the maps.simcoe.ca application to the County of Simcoe GIS Department.

When the Submit Feedback link inside the widget is selected, users are required to answer five quick questions with an opportunity to leave their comments at the end. This information is very valuable to the GIS Department as it allows them to consider ideas as well as tailor the application to the general users needs.

Using County of Simcoe Maps Services in Other Applications

Using County of Simcoe Maps Services in Other Applications

The County of Simcoe's GIS department has published many services for public use, these map services are not to be used for commercial purposes.

All of the County of Simcoe's public services can be found [here](#).

Other free map services which may be of interest can be found [here](#).

Services at ArcGIS

Please visit <http://www.arcgis.com/home/> for web services published for public use.

Search all content for using the keywords "Simcoe County".

You will find access to Aerial Photos, Topographic, street and hybrid services for Simcoe County.

Great resources for using ArcGIS Online can be found [here](#).

Contact Us

If you have any Questions or Comments please contact the County of Simcoe GIS Department by email at itsupport@simcoe.ca.

Index

1	
1024x768	3
11x17	22
1280x1024	3
2	
2km	32
4	
4Mb/s	3
8	
8x11	22
A	
About Adobe Flash Player	18
About ArcGIS Viewer	18
Flex	18
Acrobat PDF	3
Add	22
vertice	22
Address Numbers	24
Address Search	7, 30
Adjala	1
Administrations	1
Advanced	7, 9, 16
Advanced Mode	7, 9, 13
Advanced Search	13
Advanced Viewer	10
Aerial Photos	17, 35
Agreement	1
All Layers	13
Allows	18
GIS	18
ANSI	17
ArcGIS	35
ArcGIS Online	35
ARN	27
Assessment Parcel Roll Number	9
Assessment Parcels	17, 24, 28
Assessment Roll Numbers	27
Available Templates	22
B	
Bag Tag Locations	15, 32
Barrie	1, 30, 33
Barrie Real Estate Board	30
Base Maps	16
Basemap	7, 16
Basemap Switching	7
Basemap Types	16
Basemaps	7, 16
Basic	7, 8, 9
Basic Mode	8
Bays	9
Benefits	28
County	28
Boat Launches	17
Bradford West Gwillimbury	1
Bridge Construction	34
Button will copy	25
C	
Canada	1
Right	1
Catholic Elementary	32
Displays	32
Catholic School	32
Catholic School Board Website	32
Catholic Secondary	32
Displays	32
Checked Layers	13
Childcare Facilities	14
City	1
Corporation	1
Civic Address Points	17
Clear	22
Clearview	1
Clicking	24
colour	24
Clipboard	18
Copy Map XY Coordinates	18
Copy Projected XY Coordinates	18
Closest Fire Hydrant	32
Closest Firehall	32
Closest Hospital	32
Closest Police Station	32
Collingwood	1
Colour	22, 24
clicking	24
Comments	37
Commercial	33
Concession	17
Concession Number	29
Concession Search	7, 29
Conditions	1
Condos	33
Consent	1
Licensor	1
Conservation Areas	13, 14, 17
Contact	1, 37
County	1, 37

Contact Us	37	District Association	1, 33
Contents	9, 10, 12, 13, 14	Realtors.....	1, 33
Table	9, 10, 12, 13, 14	District Real Estate Board	30
Contents Pane	13	Document	8
Table	13	Download.....	22
Coordinate System	18	Draw	22
Coordinates	25	E	
Coordinates menu	18	Email	37
Go	18	Email itsupport	1
Coordinates tool	25	Enter	27
Copy	1	15	27
Site Products.....	1	EPS	22
Copy Coordinate	25	Essa	1
Copy Map XY Coordinates	18	Expand	34
Clipboard	18	Helpful	34
Copy Projected XY Coordinates	18	Export Results	24
Clipboard	18	F	
Corporation	1	Farms	33
City.....	1	Fast Search.....	27
County	1	Feedback.....	34
Town	1	Filtering.....	13
Township	1	Table	13
County	1, 7, 16, 27, 28, 34, 35, 37	Find Landfill	7
benefits.....	28	Find Layers.....	13
contact.....	1, 37	Find Property	7
Corporation.....	1	Firefox.....	3
maps.simcoe.ca application.....	34	Firehalls.....	17
notify.....	1	Flash Player 11.....	3
photographs	16	Flex.....	18
Simcoe	1, 7, 27, 34, 35	About ArcGIS Viewer	18
Simcoe District School Board.....	1	Forest.....	7, 14, 28
Simcoe Interactive Mapping Application.....	1	Forest Tract.....	28
Simcoe maps.simcoe.ca.....	1	Forest Tract Search.....	7, 28
Simcoe's GIS.....	35	Forest/Recreation Borders	14
County Forest Access Roads	17, 20	Forested Area	17
County Forest Tracts.....	13, 14, 17, 24	Functionality Matrix	7
CSV	24	G	
D		Ganaraska Hiking Trail Association	1
Data	1, 17	Garbage	7, 32
Data Acquired	17	Garbage Collection Zones	17
Data Updated	17	Garbage/Recycling Collection Day.....	32
Datasets.....	9	General	32
Department	1	Geographic Information Systems	1, 5
Natural Resources.....	1	Geographic Township	9, 17, 29
Developer Tool	25	Get Extent	25
Displays.....	32, 33	Get Map Extent.....	18
Catholic Elementary.....	32	Getting	3, 25
Catholic Secondary	32	Help.....	3
MLS	33	Started	3
Public Elementary.....	32	GIF.....	22
Public Secondary.....	32	GIS.....	1, 5, 18
Distance	32	GIS datasets	5
Municipal Administration Centre	32	GIS Department	34

Global Settings.....	18	Jurisdictions	24
Globe	19	L	
include	19	Lake Simcoe Region Conservation Authority.....	1
Go		Lakes	5
Coordinates menu	18	Landfill	15
Golf Courses.....	17	Landfill Locations	32
Google Chrome.....	3	Layer Symbology.....	12
Google Street View	25	Viewing	12
Google's	25	Layer Transparency Slider.....	13
Grant.....	1	Layers On	12
Licence	1	Turning.....	12
You	1	Licence	1
Greater.....	32	Grant.....	1
Greenways	1	Licence Restrictions	1
H		Licensor.....	1
Help.....	3	consent	1
Getting	3	request.....	1
Help file.....	3	Limitation Of Liability.....	1
Help Tips	34	Link	3
Helpful	34	Live.....	25
expand	34	Live Coordinates	25
Helpful Hints	34	Live Layers	12, 34
Her Majesty	1	Load	33
Queen	1	MLS	33
Hide Roads.....	17	Long Term Care Facilities.....	17
High-speed Internet.....	3	Lot.....	29
Historic Township Names	9	use	29
HTML	3	Lot Number.....	29
HTML file.....	3	M	
Huronian Trails.....	1	Major Lakes	9
I		Map.....	9, 25
Identify.....	8, 24	Map Application Overview	7
Imagery - The Imagery basemap	16	Map Application Search.....	7
Imagery basemap	16, 17	Map Navigation	7, 19
viewing.....	17	Map Themes	13
Imagery Slider	17	Map Tools	21
Imagery, Topo.....	16	Maps.simcoe.ca	25
Inc	1	Maps.simcoe.ca application	16, 18, 21, 26, 34
Include	19	County	34
Globe	19	use	34
Innisfil	1	Maps.simcoe.ca application Imagery	7
Interactive Mapping Application	1	Maps.simcoe.ca Recommended System	
Internet.....	5	Requirements	3
Internet Explorer	3	Maps.simcoe.ca Secure Area	1
Intersection Search.....	31	Maps.simcoe.ca Terms	1
Introduction.....	5	Use	1
GIS.....	5	Marinas & Moorings.....	17
J		Measure.....	8, 24
JPEG	22	Measure tool	24
save.....	22	Medonte	1
Jump	7, 26	Members	1
Municipality	7, 26	Ontario Geospatial Data Exchange	1
Municipality Widget	26	Midhurst District.....	1

Midland.....	1	Orillia	1
Minimum Screen Resolution	3	Oro.....	1
Misuse	1	Orthophotography.....	17
Site Products.....	1	Other Applications.....	35
MLS.....	30, 33	Other XY Tools	25
displays	33	Output Formats	22
load	33	Ownership Parcel PIN	9
use	30	Ownership Parcels	17, 24, 28
MLS Listing.....	33	P	
MLS Listing button	33	Paramedic Stations	17
MLS Number Search	7, 30	Partner Disclaimers.....	1
Modern Web Browser	3	PDF.....	3
MPAC	32	Pdf file.....	32
Municipal	13	Penetanguishene	1
Municipal Administration Centre	17, 32	Photographs	16
distance	32	County	16
Municipal Boundaries.....	5	Photos.....	33
Municipal Jurisdictions	9	Photos button.....	33
Municipal Parks	14, 17, 20	PIN	28
Municipal Property Assessment Corporation.....	1, 32	use	28
Municipality.....	7, 14, 26, 28	PIN Number Search	7, 28
Jump	7, 26	PIN Search Widget.....	28
use	28	Place Names	9
Municipality Filter.....	30	PNG.....	22
use	30	Polyline	24
Municipality Widget	26	Print	8, 22
Jump	26	option	22
Museum & Archives.....	17	Product Credits	1
N		Project	25
Natural.....	17	Property Boundaries.....	5
Natural Resources.....	1	Property Identification Number	28
Department	1	Property Information.....	18, 32
Ontario Ministry	1	Property Type	32, 33
Natural Resources Canada.....	1	Province.....	1, 29
New Tecumseth.....	1	Ontario.....	1
North Simcoe Muskoka Community Care Access		Provincial	13
Centre	1	Provincial Parks.....	14, 17
Notify	1	Public Elementary	32
County	1	Displays	32
Nottawasaga Valley Conservation Authority.....	1	Public School.....	32
O		Public School Board Website.....	32
Ó Land Information Ontario	29	Public Secondary.....	32
Off.....	12	Displays	32
Official Plan Layers.....	17	Q	
Ontario.....	1, 28	Queen	1
Province	1	Her Majesty	1
Ontario Geospatial Data Exchange	1	Queens Printer.....	1
Members	1	Questions.....	37
Ontario Ministry	1	R	
Natural Resources.....	1	Railways.....	5
Ontario Works Offices	17	Ramara.....	1
Option.....	22	Real Estate	33
Print	22	Real Estate Widget	33

Realtors.....	1, 33	Simcoe	1, 7, 16, 27, 34, 35
District Association	1, 33	County	1, 7, 27, 34, 35
Recenter	20	Simcoe County.....	7, 13, 16, 17, 26, 33, 35
Recommended Screen Resolution.....	3	view	7, 16
Recreation	14	Simcoe County Farm Fresh Marketing Association ...	1
Recycling.....	32	Simcoe County Forest.....	28
Refer	8	Simcoe County GIS.....	17, 18
Section	8	Simcoe District School Board.....	1
Representations.....	1	County	1
Request.....	1	Simcoe GIS Department.....	34, 37
Licensor.....	1	Simcoe GIS Section	1
Residential	33	Simcoe Interactive Mapping Application.....	1
Respect	1	County	1
Site Products.....	1	Simcoe Maps Services	35
Right.....	1	Using County.....	35
Canada	1	Simcoe maps.simcoe.ca.....	1
Right Click Context Menu	18	County	1
Rivers	5, 9	Simcoe Muskoka Catholic District School Board	1
Road Construction	34	Simcoe Muskoka District Health Unit.....	1
Road Work.....	34	Simcoe.ca.....	1
Road Work Widget	34	Simcoe's GIS.....	1, 35
Roads	5, 24	County	35
Roll.....	27	Single Line Road Network.....	17
use	27	Site Products.....	1
Roll Number.....	32, 33	copy	1
Roll Number Search.....	7, 27	misuse.....	1
Roll Number Search Widget	27, 29	respect	1
S		sell.....	1
Save	22	use	1
jpeg.....	22	Users.....	1
School Attendance Boundaries	17	Solid Waste Facilities	15
Scientific Interest.....	17	Springwater	1
Screenshot.....	22	Started	3
Scrollable	28	Getting.....	3
Scrollable list.....	26	Statistics Canada.....	1
Search	9	Streams.....	9
Search Address	30	Street Address	9
Search button	29	Street Name.....	9
Search Tools.....	21, 26	Street View	7, 8, 25
Search, Draw.....	8	Street View Viewer	25
Section	8	Street View Viewer window	25
refer	8	Streets.....	7, 16
Select All	28, 30	Streets - The Streets	16
Select Community.....	9	Submit Feedback	34
Selected Coordinates.....	25	Suppliers	1
Selecting	18, 22	SVG	22
Sell	1	System Requirements.....	3
Site Products.....	1	T	
Services.....	35	Table	9, 10, 12, 13, 14, 20
Severn.....	1	Contents	9, 10, 12, 13, 14
Severn Sound Environmental Association	1	Contents Pane.....	13
Show	24, 25	Filtering.....	13
Google's	25	Using	10

Tax Assessment	32	PIN	28
Tay	1	Roll	27
Teranet Enterprises Inc.....	1	Site Products.....	1
Terms	1	Tool	24
Terms and Conditions	1	User's	1
The Other XY Tools	25	Site Products.....	1
The Topo basemap	16	transferred.....	1
Themes	7, 13	Using	10
Themes button	13	Table	10
These Trail Maps.....	1	Using County.....	35
Tiny	1	Simcoe Maps Services.....	35
To Users.....	1	V	
Tools	13, 21, 24	Vacant Land	33
Use.....	24	Vertice	22
Topo.....	7, 16	add.....	22
Topographic.....	7, 35	View.....	7, 12, 16, 17
Toronto Region Conservation Authority.....	1	Imagery Basemap	17
Tosorontio	1	Layer Symbology.....	12
Tourism Features.....	9	Simcoe County	7, 16
Town	1	View Planned Road Work	7
Corporation.....	1	View Properties For Sale.....	7
Township	1	Visible Extent	20
Corporation.....	1	Zoom.....	20
Train Stations.....	17	W	
Transferred	1	Warranties.....	1
User.....	1	Wasaga Beach.....	1
Tree Cut Permits	17	Waste Collection Schedule	15
Turn Layers	7	Water Features.....	9
Turned on	14	Web Map	5
Turning.....	12	Welcome.....	1
Layers On	12	Well Head Protection Areas	17
U		Wetlands.....	5
Unchecked Layers	13	WGS 84 Web Mercator.....	18
Unchecking	24	Widgets.....	21
URL.....	32	Woodlands.....	17
Use.....	1, 24, 27, 28, 29, 30, 34	Workflows.....	34
Corporation.....	1	X	
Lot	29	XY	25
maps.simcoe.ca application.....	34	XY Coordinates.....	7, 18
maps.simcoe.ca Terms	1	Z	
MLS	30	Zoom.....	20, 33
Municipality	28	Visible Extent	20
Municipality Filter.....	30	Zoom button.....	33